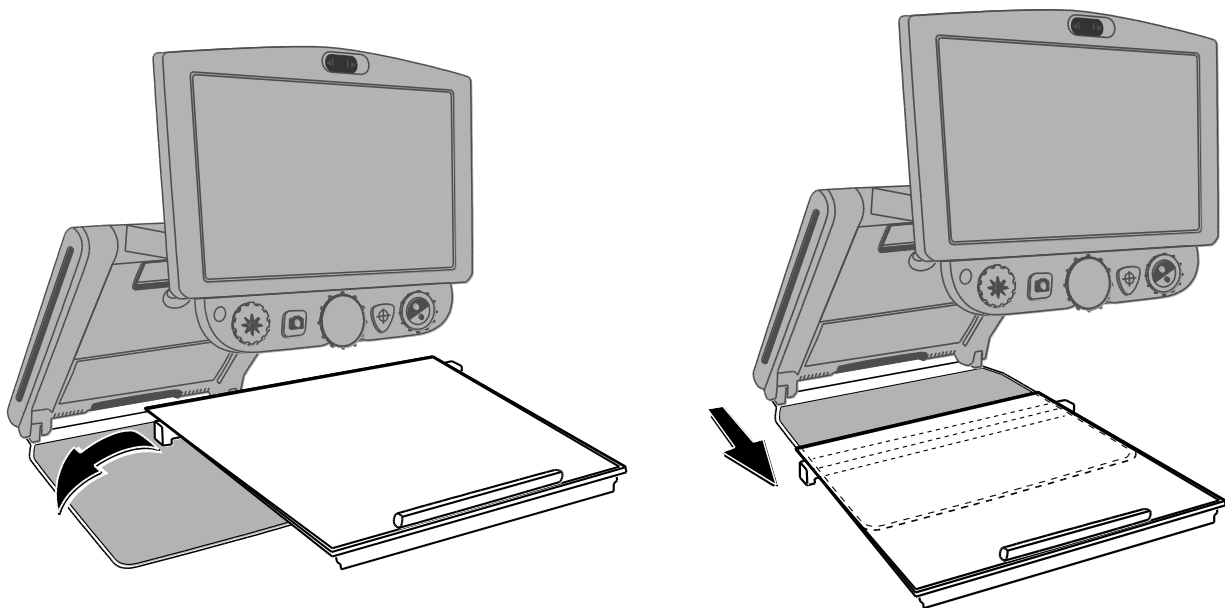



To attach the TOPAZ PHD XY table, do the following:

1. Open the TOPAZ PHD.
2. Hold the XY table with both hands, and move it toward the rear of the unit's baseplate.
3. Place the table on the baseplate so that the notched legs straddle it.
4. Slide the entire table forward until the notched legs are midway down the baseplate.



5. Place an item on the table, and move the table top (left, right, forward, or back) until the area of interest appears on the screen.
6. Adjust magnification, and, if you like, use the orange FIND button  to help you position the item.
7. Continue to move the table top and adjust magnification until you are comfortable with the view on the screen.
8. When you are finished using the TOPAZ PHD, remove the XY table before closing the unit.