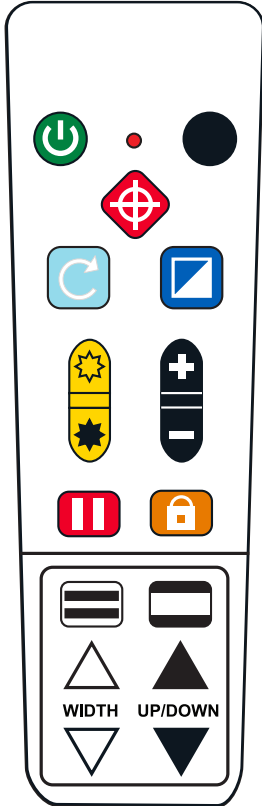


# ONYX® Portable HD Remote Control Reference Card



**Power (Green)** Turns unit on and off



**Advanced (Black)** Use in combination with other buttons to perform advanced tasks.



**Find (Red)** Displays crosshairs and zooms out to help aim the camera



**Flip (Light Blue)** Cycles through four different picture orientations



**Color Mode (Blue)** Cycles through different color modes



**Brightness (Yellow)** Increases and decreases screen brightness



**Zoom (Black)** Zooms camera view in and out



**Freeze Frame (Red)** (1) Freezes the current image displayed on the screen (2) Hold for approximately six seconds to enter or exit Review mode



**Focus Lock (Orange)** Turns Auto Focus on and off



**Reading Lines (White and Black)** Displays two horizontal or vertical reading lines



**Mask (Black and White)** Displays shades or masks to cover parts of the screen



**Width (White)** (1) Changes spacing between reference lines, shades, or masks (2) Scrolls through saved images when in Review mode



**Up and Down (Black)** Moves shades, masks, and reading lines on the screen



**Advanced + Power.** Hold for approximately six seconds to enter or exit Configuration mode



**Advanced + Freeze Frame.** (1) Saves the current image to an SD Card (2) Starts or stops a slide show when in Review mode



**Advanced + Find.** Deletes the current image when in Review mode