

ElBraille 40 V

User's Guide

Freedom Scientific Inc.

Freedom Scientific Inc.
www.FreedomScientific.com

Information in this document is subject to change without notice. No part of this publication may be reproduced or transmitted in any form or by any means electronic or mechanical, for any purpose, without the express written permission of Freedom Scientific.

Copyright © 2020 Freedom Scientific. All Rights Reserved.

JAWS is a registered trademark of Freedom Scientific in the United States and other countries. Microsoft and Windows are registered trademarks of Microsoft Corporation in the U.S. and/or other countries.

USA-Federal Communications Commission (FCC) Notice

This equipment has been tested and found to comply with the limits for a Class B digital device, pursuant to Part 15 of the FCC Rules. These limits are designed to provide reasonable protection against harmful interference in a residential installation. This equipment generates, uses, and can radiate radio frequency energy and, if not installed and used in accordance with the instructions, may cause harmful interference to radio communications. However, there is no guarantee that interference will not occur in a particular installation. If this equipment does cause harmful interference to radio or television reception, which can be determined by turning the equipment off and on, the user is encouraged to try to correct the interference by one or more of the following measures:

- Reorient or relocate the receiving antenna.
- Increase the separation between the equipment and receiver.
- Connect the equipment into an outlet on a circuit different from that to which the receiver is connected.
- Consult the dealer or an experienced radio /TV technician for help.

This device complies with part 15 of the FCC Rules. Operation is subject to the following two conditions: (1) This device may not cause harmful interference, and (2) this device must accept any interference received, including interference that may cause undesired operation.

Any changes or modifications not expressly approved by the party responsible for compliance could void the user's authority to operate the equipment.

Caution: Exposure to Radio Frequency Radiation.

This device must not be co-located or operating in conjunction with any other antenna or transmitter.

Safety and Maintenance

Do not attempt to repair EIBraille or open its case. This product contains no user serviceable parts. Any unauthorized attempt to service or replace internal components will void the product warranty.

Keep EIBraille away from wet areas, rain, and other sources of liquids. Do not submerge EIBraille.

Always operate EIBraille in a place where the temperature is between 5° and 35° C (41° and 95° F).

Do not store in places subject to temperature extremes such as a parked car.

Use only the power adapter that came with EIBraille to charge its internal battery pack. Other adapters may damage the unit.

Table of Contents

Introduction.....	1
What's in the Box?.....	3
Physical Layout	4
LED Indication Types.....	6
Docking and Undocking the Braille Display	6
Description of Focus Blue Controls	8
Overview of JAWS BrailleIn	10
Modifier Keys.....	10
Function Keys.....	12
Quick Start	13
Turning On EIBraille.....	13
Turning Off or Restarting EIBraille	13
EIBraille Rescue Menu.....	14
Braille Display Modes	14
Viewing Device Status Information	15
Default EIBraille Key Assignments.....	15
EIBraille Main Menu.....	16
Basics of Working with JAWS and Windows on EIBraille	17
Windows Basics.....	17
The Start Menu	17
Working With Windows and Dialog Boxes	17
Entering Data.....	18
Basic Reading and Navigation Commands.....	19
Windows Explorer.....	19
Other Common Commands	19
Common QWERTY Keyboard Keys Simulated on the Braille Display	20
Basic JAWS Setup.....	21
JAWS Startup Wizard	21
Turning off Speech	22
Connecting to a Network.....	23
Connecting to a Wi-Fi Network	23

Connecting to a Mobile Network	23
Troubleshooting	25
Service and Support	26
Locating the ElBraille Serial Number.....	26
Warranty and Registration	26

Introduction

Welcome to your EIBraille, the twenty-first century, take anywhere replacement for the dedicated notetaker. Running Windows 10 with JAWS, and a braille display with a full Braille keyboard, your EIBraille 40 is a fully accessible compact computer.

The EIBraille includes the following key features:

- Runs Windows 10 64-bit and JAWS
- Works with Focus 40 Blue 5th Generation Braille display
- 7th generation Intel® Core™ i5-7Y57 Processor with vPro technology Dual-core (4M Cache, up to 3.30 GHz)
- 8 GB RAM
- 128 GB of internal SSD storage
- Two stereo speakers and 1/8" (3.5 mm) headphone jack
- Built-in microphone
- Additional sound and vibration feedback for key functions such as powering on and off or connecting or disconnecting the AC adapter
- Wireless WLAN802.11 A/B/G/N/AC networks support (2.4 and 5 GHz)
- Bluetooth V4.2
- A built-in 4G LTE modem for cellular connectivity supporting AT&T compatible systems
- GPS/Beidou/Glonass/Galileo/QZSS
- SD card slot supporting SD, SDHC, SDXC up to 2 TB
- Ports: 2 USB 3.0, USB-C, and SIM card slot
- HDMI monitor connection supported via Windows Miracast WiFi connection using an optional HDMI dongle (not included)
- Rechargeable 21.5 Amp Hour battery (Approximately 15 hours on battery)

- Specially designed apps for performing popular actions such as the creation of voice or text notes, listening to audio content, and more
- Supports Microsoft Office 365, Office 2019, Office 2016, Office 2013, and Office 2010
- ElBraille 40 V dimensions: 14.6×5.2×1.5 in. (370x132x39 mm)
- ElBraille 40 V weight: approximately 3.75 lbs. (1.7 kg) including Braille Display

What's in the Box?

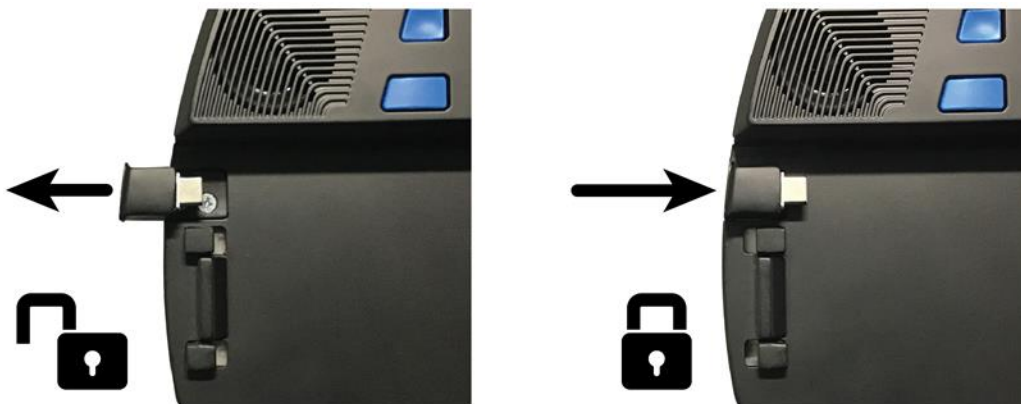
- ElBraille 40 unit
- ElBraille carrying case with a shoulder strap
- ElBraille AC adapter and universal plug adaptors for use in other regions
- USB thumb drive containing ElBraille manual in PDF format

Physical Layout

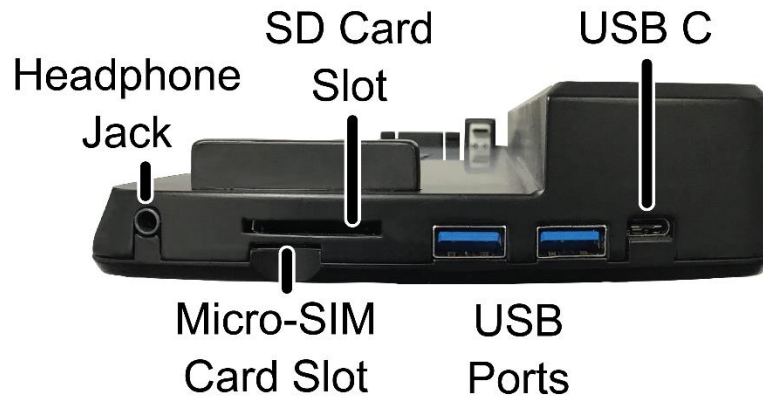
Position the EIBraille on a flat surface so the opening for the braille display is directly in front of you.



On the left side, going from the left front corner to the left back corner, you will find a lever for locking and unlocking the Focus Blue braille display. When you place a Focus Blue braille display into EIBraille, pushing the lever in locks the braille display in place. Pulling the lever out unlocks the braille display so it can be removed from EIBraille.

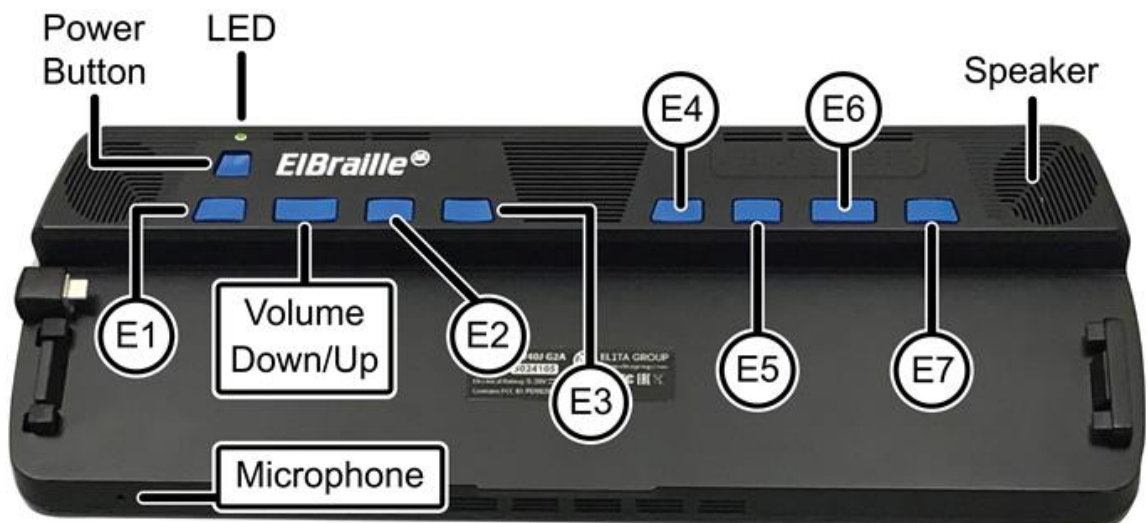


On the right side, going from the right front corner to the right back corner, you will find a headphone jack, SD card and Micro-SIM card slots, two standard USB ports, and a USB C port. The Micro-SIM card slot is located directly under the SD card slot and allows you to insert a SIM card from AT&T and use the built-in 4G LTE modem. The USB C port is used for charging the unit as well as connecting the EIBraille to a PC so you can use the Focus 40 Blue as a braille display over USB with another device.



The front part of the unit contains the braille display. The internal microphone is located on the very front closest to the left corner.

Above the display are eight buttons. Going from left to right, they are; E1, the Volume Up/Down rocker, E2, E3, E4, E5, E6 (also referred to as the Display Connection Mode button), and E7. A recessed Power button is located directly above E1, and the LED indicator is located directly above the Power button. The speakers are located to the left and right of the E1-E7 buttons. A fan vent is also positioned above these buttons toward the center.



LED Indication Types

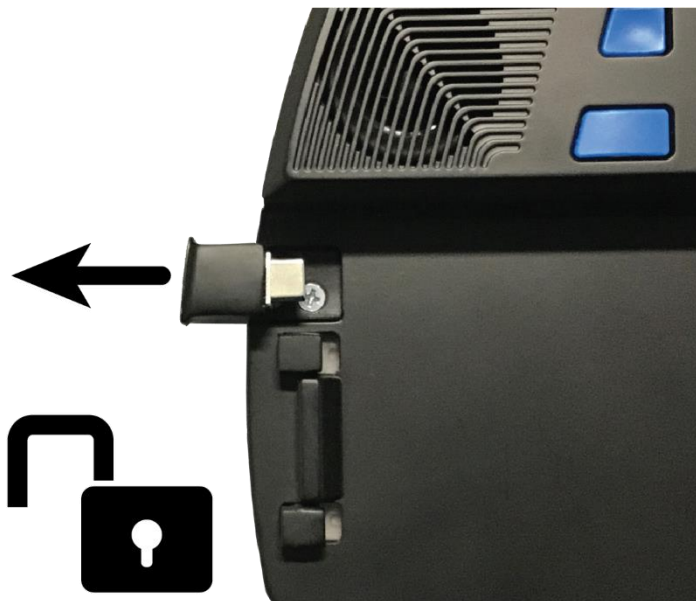
The following table lists the available LED indicator types.

Color	Meaning
Green	The unit is turned on and running on battery
Yellow	The unit is turned on and plugged into an outlet using the AC adapter
Red	The unit is turned off and charging
No indication	The device is turned off and is not charging. If the unit is plugged in, it can also mean the battery is fully charged.

Docking and Undocking the Braille Display

To dock the Focus 40 Blue with the EIBraille, do the following:

1. Gently pull the locking lever on the left side of the EIBraille until it is fully retracted. Do not attempt to force the lever beyond the point where it stops.



2. Lower the Focus display until it is resting in the open front section of the EIBraille and make sure the back edge of the Focus is flush with the section containing the EIBraille buttons.



3. Push the locking lever to lock the display in place and establish the USB connection.

In most cases, you can leave the Focus docked with the EIBraille as you can use it over Bluetooth or even USB with another device and easily switch back to using it with the EIBraille. If you need to undock the Focus 40 Blue, do the following:

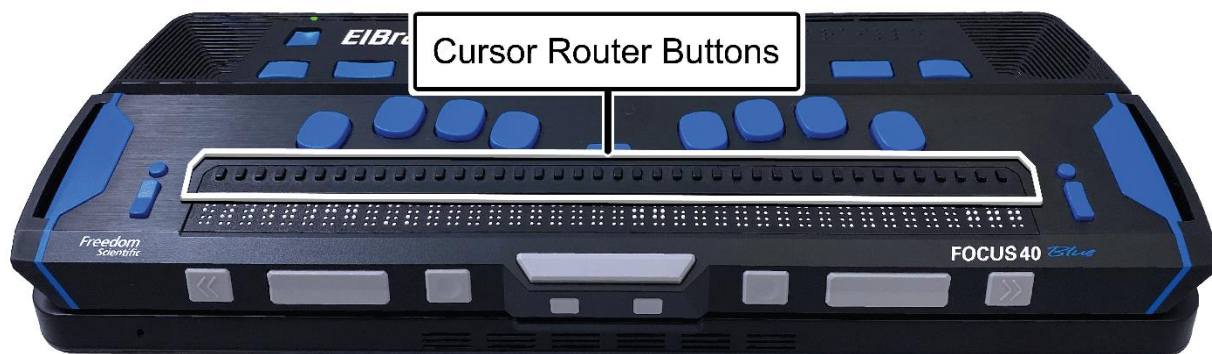
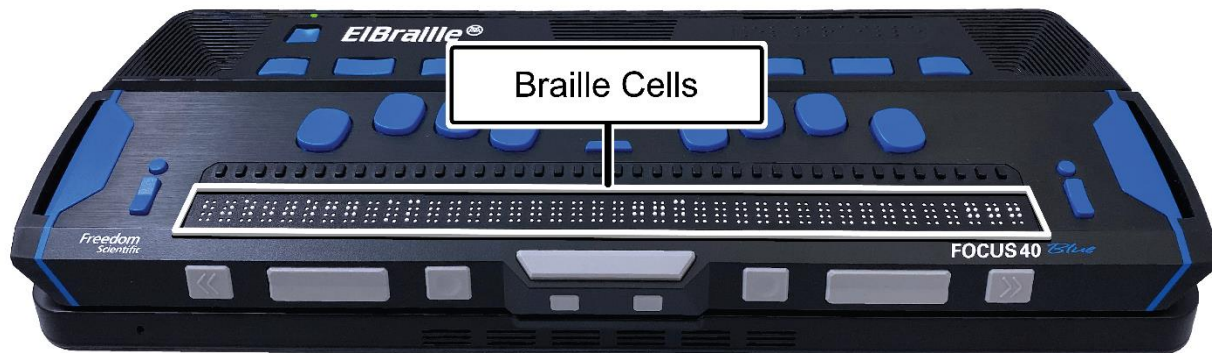
1. Remove the EIBraille from its carrying case.
2. Gently pull the locking lever on the left side of the EIBraille until it is fully retracted. Do not attempt to force the lever beyond the point where it stops.
3. Slightly lift the left end of the display and slide it to the left to release the right connectors and then lift it away from the unit.

Important: It is only necessary to slightly lift the left end of the display to remove it. Lifting the left end too high could increase the risk of damage to the locking connectors on the right side of EIBraille as well as the connection points on the Focus Blue.

If the Focus is not docked, you can still operate EIBraille using a standard USB or Bluetooth keyboard as the EIBraille is a full Windows 10 PC.

Description of Focus Blue Controls

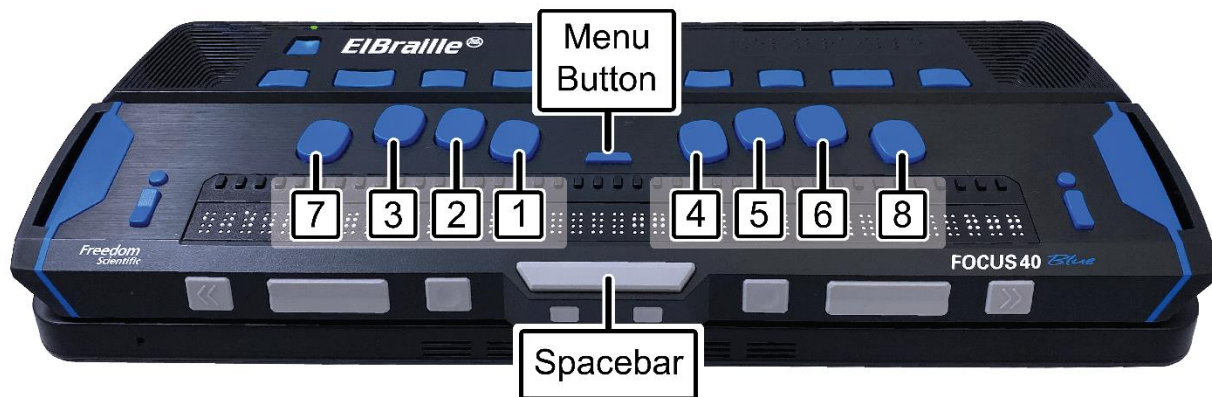
The refreshable braille cells are located toward the front of the unit. A refreshable display creates braille by electronically raising and lowering different combinations of pins in each braille cell. Above each braille cell is a Cursor Router button used for moving quickly to that location.



At each end of the display's surface are NAV Rockers used for easy navigation. Positioned above each NAV Rocker is a NAV mode button which cycles through different navigation modes.



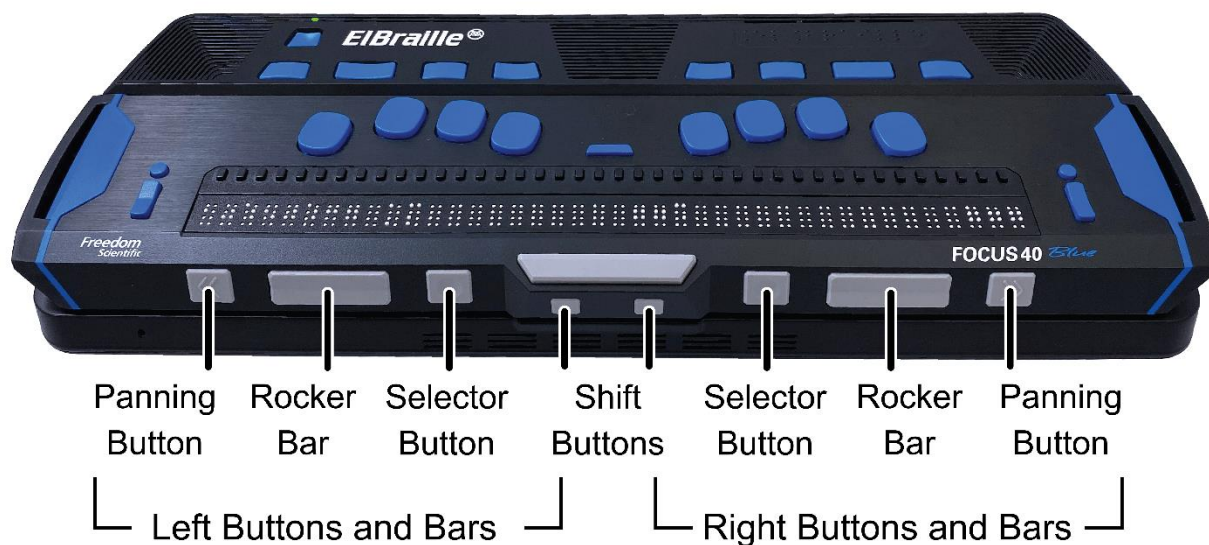
Positioned directly above the Cursor Router buttons is an 8-dot Perkins-style braille keyboard. Going from the center, the left-hand keys contain the following: Dot 1 under the index finger, Dot 2 under the middle finger, dot 3 under the ring finger, and dot 7 under the little finger, while the right-hand contains: Dot 4 under the index finger, Dot 5 under the middle finger, Dot 6 under the ring finger, and Dot 8 under the little finger. These keys are used to enter text or perform commands.



Between dots 1 and 4 is a Menu button which is used to access the Focus configuration menu as well as display Focus status information during an active connection.

On the front edge, directly under and in the center of the display is a SPACEBAR. This key is used together with the braille keys when entering commands. A command that includes the SPACEBAR is commonly referred to as a chorded command. For example, **L CHORD** or **DOTS 1-2-3** and the **SPACEBAR**.

On the very front of the display are the following controls, located from left to right: Left Panning button, Left Rocker bar, Left Selector button, Left Shift button, Right Shift button, Right Selector button, Right Rocker bar, and Right Panning button. For more information about the Focus Blue controls, refer to your Focus Blue User's Guide.



Overview of JAWS BrailleIn

The JAWS BrailleIn feature allows you to use the Perkins-style braille keyboard on the braille display to control EIBraille. Using the keyboard along with other Focus controls, you can perform all Windows and JAWS commands that you can do from a regular QWERTY keyboard. In addition, you can also enter text using contracted or uncontracted braille. For more information about BrailleIn, refer to the BrailleIn topic in the JAWS Help under the JAWS and Refreshable book. Additionally, go to <https://support.freedomscientific.com/Services/TrainingAndCertification/WebinarDetail/F0109> to access a free webinar demonstrating how to use the BrailleIn feature.

Tip: If necessary, you can also use a USB or wireless QWERTY keyboard with the EIBraille.

Modifier Keys

Use the keys on the braille display to simulate key combinations (keystrokes) that include **CTRL**, **ALT**, **WINDOWS Key**, **SHIFT**, or the JAWS Key (**INSERT**). To use these modifiers when typing a keystroke, do the following:

1. Hold down **DOT 8 CHORD** and then press the corresponding modifier keys in the keystroke. Modifier keystrokes are listed below.

2. After you create the modifier portion of the keystroke, release the keys and press the remaining part of the keystroke. For example, to perform the keystroke CTRL+SHIFT+V, you press DOTS 3-7-8 CHORD, release the keys, and then press V (DOTS 1-2-3-6).

- **Function Keys** (F1 through F12): **DOT 1**
- **INSERT**: **DOT 2**
- **CTRL**: **DOT 3**
- **WINDOWS Key**: **DOT 4**
- **JAWS Key**: **DOT 5**
- **ALT**: **DOT 6**
- **SHIFT**: **DOT 7**

Instead of memorizing these keys by their dot position, it may be easier to learn the finger with which each key would be associated. When all of your fingers are on the braille keyboard, the layout would be:

- **Function Keys**: Left index finger
- **WINDOWS Key**: Right index finger
- **INSERT**: Left middle finger
- **JAWS Key**: Right middle finger
- **CTRL**: Left ring finger
- **ALT**: Right ring finger
- **SHIFT**: Left little finger

Notice that you can create a rather loose correlation between pairs of fingers in this description. For example, the left index finger is **Function** Keys while the right index finger is the **WINDOWS** key. A stronger correlation can be made with the left and right middle fingers. The left is the **INSERT** key and the right is the **JAWS** key, both often serving the same purpose in JAWS usage. Finally, the left and right ring fingers are the **CTRL** and **ALT** keys respectively, which make these two positions easier to remember.

Once this layout is understood, it is easy to grasp that Any time a modifier key, or combination of modifier keys is used as part of a command, **DOT 8 CHORD** will always be included.

Finally, pressing any of these modifier keys with **DOT 8 CHORD** is the same as pressing and holding any of the equivalent keys on the QWERTY keyboard. The computer is waiting for the key or keys which the modifier keys will modify. So, pressing **DOTS 3-8 CHORD** is the same as pressing the **CTRL** key. Windows then waits for the key which will complete the CTRL combination, such as the letter **A** to make **CTRL+A** to select all, or the letter **C** to make **CTRL+C** to copy the selected text to the clipboard. Repetition of frequently used keystrokes such as the CTRL key combinations already mentioned, Windows commands such as **WINDOWS Key+M**, and JAWS commands such as **INSERT+T** should imprint these key associations firmly in your memory.

Function Keys

To simulate the function keys (**F1** through **F12**), press **DOTS 1-8 CHORD** followed by **A** through **L** (which correspond to 1 through 12). For example, to simulate the **F6** key, press **DOTS 1-8 CHORD**, then **F** (**DOTS 1-2-4**). If the function key is part of a key combination, add the appropriate modifiers while holding down **DOTS 1-8 CHORD**. For example, to simulate the keystroke **INSERT+F2**, press **DOTS 1-2-8 CHORD**, then **B** (**DOTS 1-2**).

Quick Start

Note: Before turning EIBraille on for the first time, fully charge the battery using the supplied AC adapter. The unit emits two ascending tones and vibrates when the AC adapter is connected and emits two descending tones and vibrates when the adapter is disconnected. When the battery is charging, the LED indicator lights up red. It takes approximately five to seven hours to fully charge the unit. Press **E2** while the unit is powered on to check the battery charge level.

Turning On EIBraille

To turn on the EIBraille, press and hold the recessed Power button located directly above E1 until the unit beeps and vibrates. During the startup process, you will hear a series of short beeps and feel occasional vibrations. Once the device has booted, you will hear JAWS speaking and the display will show some text. Finally, you will be placed on the Windows Desktop.

Turning Off or Restarting EIBraille

To put the EIBraille to sleep, completely shut down, or restart, do the following:

1. Press **WINDOWS Key+X (DOTS 4-8 CHORD)** followed by **DOTS 1-3-4-6** to open the Quick Link menu.
2. Press **U (DOTS 1-3-6)** to open the Shut down or sign out submenu.
3. Use the Left Rocker bar to select an option and then press **DOT 8**. If you decide to continue working, press **Z CHORD (DOTS 1-3-5-6+SPACEBAR)** to cancel.

You can also press the Power button to put EIBraille to sleep. Press the Power button again to wake the unit up and resume working where you left off.

Note: Shutting down or restarting can take some time. Please wait for the beeps and vibration alerts indicating the device is turned on or turned off.

EIBraille Rescue Menu

Sometimes, it may be necessary to shut down or restart if the device is not working correctly. For example, you unexpectedly lost speech or braille output from JAWS. You can easily do this using the EIBraille Rescue menu. This menu provides speech and braille output even if JAWS is not currently working correctly.

To open the Rescue menu, press and hold the **E1** button. You will hear a beep followed by a menu containing three items: Restart JAWS, Shut Down, and System Reboot. Use the **NAV Rockers** to navigate the menu and press a **NAV Mode** button to activate the selected item. To close the menu, press **RIGHT SHIFT+DOT 1**. Alternatively, you can use the **Volume Up/Down** rocker to navigate, the **E4** button to activate an item, or **E1** to close the menu.

Note: Use the Rescue menu only when absolutely necessary as shutting down or restarting from this menu will not guarantee anything you are currently working on is saved. In addition, if JAWS speech is currently working, you will hear double speaking as the speech in this menu is independent from JAWS.

Braille Display Modes

By default, when the Focus 40 Blue is docked, it works as a braille display with EIBraille. However, it can also be used as a stand-alone Focus 40 Blue that can be connected to a PC using the USB C port on the side of the EIBraille or used as a Bluetooth device.

To hear the current braille display mode, press **E6**. To switch between modes, press and hold **E6** until you hear a brief tone.

When the EIBraille is on, switching the braille display mode will turn the display off.

If you connect the EIBraille to a PC using the USB C port on the right side of the unit, the braille display mode automatically switches to the PC connection, and the Focus 40 Blue acts like a stand-alone display. You can then press and hold **E6** to toggle the Focus between the EIBraille and PC connection. When you disconnect from USB, the braille display mode automatically switches back to the EIBraille connection.

If the EIBraille is off, the display operates as if it was a stand-alone Focus 40 Blue, and the EIBraille buttons do nothing.

Note: The EIBraille will charge when connected to a computer through the USB C port as long as the EIBraille is turned off. However, charging time will take longer than with the supplied AC adapter.

Viewing Device Status Information

Use the EIBraille buttons at any time to check the battery status, network connection, or the time and date.

- To check the battery status, press **E2**.
- To view wireless network status information, press **E2** twice quickly.
- To view the current time, press **E3**.
- To view the current date, press **E3** twice quickly.

Default EIBraille Key Assignments

Following is a list of the default assignments for the EIBraille buttons.

- **E1**: Open EIBraille Main menu
- **E1** (press and hold): Open EIBraille Rescue menu
- **E2**: Report battery status
- **E2** (twice quickly): Report wireless network connection status
- **E3**: Report current time
- **E3** (twice quickly): Report current date
- **E4**: Start EInotes or create a text note
- **E4** (press and hold): Record a voice note
- **E5**: Not assigned
- **E6**: Report current braille display mode
- **E6** (press and hold): Toggle the braille display mode
- **E7**: Not assigned

Note: You can modify the default key assignment for each button except for E6.

EIBraille Main Menu

The EIBraille main menu turns your device into a convenient notetaker. From this menu, you can quickly accomplish many useful daily tasks, such as writing notes or using the calculator.

To open the EIBraille main menu, press **E1**. This menu contains a number of items including:

- **My Files** — opens Windows Explorer.
- **Text Editor** — opens Windows Notepad.
- **Office Apps submenu** — if you have purchased and installed Microsoft Office, opens a submenu listing the installed Microsoft Office applications (Word, Excel, Outlook, PowerPoint).
- **Calculator** — opens Windows Calculator.
- **Keyboard Editor** — located in the EIBraille Utilities submenu, the EIBraille Keyboard editor is a specially designed application for adding, modifying, and deleting EIBraille keystroke assignments.

Use the **Rocker** bars to navigate through the menu and press **DOT 8** to activate an item. Each menu item also offers a corresponding access key you can press to quickly select it. These access keys are announced by JAWS as you navigate.

For example, you can use this menu to create a text file by doing the following:

1. Press **E1**, and then press **E (DOTS 1-5)**. The text editor opens.
2. Type in your text.
3. To save the file, press **CTRL+S (DOTS 3-8 CHORD)**, followed by **DOTS 2-3-4**. The Save File dialog box opens.
4. Type in the file name and navigate to the Save button by using **DOTS 4-5 CHORD**, and then press **DOT 8**.
5. To close the text editor, press **ALT+F4 (DOTS 1-6-8 CHORD)**, followed by **DOTS 1-4-5**.

For more information on working in an application, refer to the help for the specific application.

Basics of Working with JAWS and Windows on EIBraille

Windows Basics

Using Windows with JAWS on the EIBraille is basically the same as using a regular Windows PC. The only difference is that with EIBraille, commands are performed using the EIBraille buttons and the Focus Blue controls. The following describes how to access some of the more frequently used Windows features. For more information, see the help for Windows as well as the JAWS Help.

The Start Menu

To open the Start menu, press **RIGHT SHIFT+DOT 4**. You will be focused in the Search edit box where you can begin typing the name of an app or setting you want to find. Press a **Rocker** bar to navigate the list of search results and press **DOT 8** to select one.

To view the list of frequently used apps, configure your account, view all apps, or turn off the device, press **TAB** or **SHIFT+TAB (DOTS 4-5 CHORD or DOTS 1-2 CHORD)** to navigate through the Start menu. Use a **Rocker** bar to move through list boxes and dropdown menus. Press **DOT 8** to activate the selected item or to activate a button.

To close the Start menu, press **DOTS 1-3-5-6 CHORD**.

Working With Windows and Dialog Boxes

Windows dialog boxes can contain text information as well as various controls including check boxes, radio buttons, buttons, sliders, edit fields, and so on.

To read the window title, simultaneously press the top of the **Left** and **Right Rocker** bars. To read the status bar, simultaneously press the bottom of the **Left** and **Right Rocker** bars. To read the contents of the dialog box, press **RIGHT SHIFT+DOTS 1-2**.

To move between dialog box controls, press **TAB** or **SHIFT+TAB** (**DOTS 4-5 CHORD** or **DOTS 1-2 CHORD**). You can select a radio button, or select or clear a check box by using the **SPACEBAR** or a **Cursor Router** button. To activate a button, press the **SPACEBAR**, **DOT 8**, or a **Cursor Router** button. When focused in an edit field, enter text using the Perkins-style braille keys. To adjust the value in a slider, press a **Rocker** bar to move by small increments or press a **Rocker** bar in conjunction with a **Selector** button to move by larger increments. If the dialog box contains multiple pages (tabs), press **DOTS 5-6 CHORD** or **DOTS 2-3 CHORD** to move between the tabs.

You can have several applications open at once. The JAWS Window List dialog box enables you to switch quickly between running apps. To open the Window List dialog box, press **RIGHT SHIFT+DOT 5**. Use the **Rocker** bars to move through the list of running applications and press **DOT 8** to switch to the selected app.

For more information, please refer to the JAWS help system.

Entering Data

Use the Perkins-style braille keyboard to type text on EIBraille. You can enter text in computer braille, or contracted or uncontracted braille. If you choose to type in contracted braille, your input is immediately translated back as normal text in the current email, document, or form. If an application or specific edit box does not support contracted braille, JAWS announces "Computer Braille." In addition, the computer braille start symbol, dots 4-5-6 followed by dots 3-4-6, is shown on the braille display to indicate when computer braille is required. For more information, refer to the JAWS Help.

You can write and edit text not only in text editing applications, but also in edit fields in Windows dialog boxes as well as forms on web pages. In all cases, the commands for editing text are the same. To start a new line, use **DOT 8**. To backspace and remove the previous character, use **DOT 7**. To delete the character under the cursor, use **LEFT SHIFT+D** (**DOTS 1-4-5**) or **DOTS 1-2-3-4-5-6 CHORD**.

Basic Reading and Navigation Commands

Description	Keystroke
Say Current Line	C CHORD (DOTS 1-4 CHORD)
Say Previous Line	DOT 1 CHORD
Say Next Line	DOT 4 CHORD
Say Current Word	DOTS 2-5 CHORD
Say Previous Word	DOT 2 CHORD
Say Next Word	DOT 5 CHORD
Say Current Character	DOTS 3-6 CHORD
Say Previous character	DOT 3 CHORD
Say Next Character	DOT 6 CHORD
Say All	DOTS 1-2-4-5-6 CHORD

Windows Explorer

To open Windows Explorer, press **E1**, and then select My Files or press the letter **F (DOTS 1-2-4)**. Use the **Rocker** bars to navigate the list of files and folders and press **DOT 8** to open the selected item. To go back to the previous folder, press **DOT 7**.

Other Common Commands

Description	Command
Copy to Clipboard	LEFT SHIFT+C (DOTS 1-4)
Cut to Clipboard	LEFT SHIFT+X (DOTS 1-3-4-6)
Paste from Clipboard	LEFT SHIFT+V (DOTS 1-2-3-6)

Description	Command
Undo	LEFT SHIFT+Z (DOTS 1-3-5-6)
Delete	LEFT SHIFT+D (DOTS 1-4-5)

Common QWERTY Keyboard Keys Simulated on the Braille Display

QWERTY Keystroke	Braille Keystroke
ESC	Z CHORD (DOTS 1-3-5-6 CHORD) or RIGHT SHIFT+DOT 1
ALT (activates the menu bar in an application)	RIGHT SHIFT+DOT 2
APPLICATIONS Key	RIGHT SHIFT+DOT 2 CHORD
WINDOWS Key (activates the Windows Start menu)	RIGHT SHIFT+DOT 4
CAPS LOCK	RIGHT SHIFT+DOT 7 CHORD
BACKSPACE	DOT 7
ENTER	DOT 8
TAB	DOTS 4-5 CHORD
SHIFT+TAB	DOTS 1-2 CHORD
HOME	DOTS 1-3 CHORD
END	DOTS 4-6 CHORD
PAGE UP	Selector Button+Rocker Bar Up or DOTS 2-3-7 CHORD

QWERTY Keystroke	Braille Keystroke
PAGE DOWN	Selector Button+Rocker Bar Down or DOTS 5-6-7 CHORD
DELETE	DOTS 1-2-3-4-5-6 CHORD or LEFT SHIFT+D (DOTS 1-4-5)

Basic JAWS Setup

ElBraille users have access to all JAWS features, just like on a standard Windows PC. This section covers some basic information to help you get started. For more information about working with JAWS, refer to the JAWS help system. To open JAWS Help, press **RIGHT SHIFT+DOTS 2-4-5** to open the JAWS main window, **H** to open the Help menu, and then **J**.

JAWS Startup Wizard

The JAWS Startup Wizard allows you to customize some of the more commonly used JAWS settings. These include speech rate and verbosity, typing echo, braille translation settings, and more. The Startup Wizard can be accessed at any time by doing the following:

1. Press **RIGHT SHIFT+DOTS 2-4-5** to open the JAWS main window.
2. Use a **Rocker** bar to navigate to the Help menu and press **DOT 8**.
3. When the Help menu opens, press **Z (DOTS 1-3-5-6)** to open the Startup Wizard.

The Startup Wizard consists of several pages of options. After making your changes on each page, choose the Next button to move to the next page in the wizard. On the last page, choose the Finish button to save your changes.

Tip: If you do not want to change any options on a particular page, pressing **DOT 8** activates the Next or Finish button by default so you do not have to navigate through several options to locate this button.

Turning off Speech

If you prefer to only use the braille display, you can limit the amount of speech you hear or completely turn it off by using the **RIGHT SHIFT+M (DOTS 1-3-4)** command.

By default, pressing **RIGHT SHIFT+M** activates Speech On Demand which restricts speech to a limited set of reading keystrokes. Speech On Demand is ideal for braille users who find too much speech overwhelming, but still want speech for certain tasks like reading a window title, checking the time, or speaking the current character, line, sentence, paragraph, or doing a Say All. While Speech On Demand is active, press **INSERT+SPACEBAR (DOTS 2-8 CHORD** followed by **SPACEBAR**) and then **SHIFT+S (DOTS 2-3-4-7)** to completely mute speech. Press **RIGHT SHIFT+M** again to switch back to full speech.

If you want the **RIGHT SHIFT+M** command to toggle between full speech and completely muting speech, open Settings Center, expand the Speech Options group, and set the Less Speech Options item to Mute Speech. For more information about Speech on Demand, please refer to the JAWS Help.

Connecting to a Network

ElBraille can connect to wireless networks. You can also connect the unit to mobile networks using the built-in LTE modem. The following sections describe how to connect to these networks.

Connecting to a Wi-Fi Network

1. Press **WINDOWS Key+I (DOTS 4-8 CHORD, DOTS 2-4)** to open Windows Settings.
2. Navigate to Network and Internet and press **DOT 8**.
3. Select Wi-Fi and press **DOT 8**.
4. Select the Show available networks link and then navigate to the list of available networks.
5. Use the **Left Rocker** bar to select the network you want to connect to and press **DOT 8**. The Connect Automatically check box and the Connect button will appear. The check box is selected by default. If you want to connect to the network only once, clear this check box.
6. Press **DOTS 4-5 CHORD** to navigate to the Connect button and press **DOT 8** again. If the network is secure, you are prompted to enter a password.
7. Type in the password and press **DOT 8**. If the connection is successful, you will see “Connected” near the selected network in the networks list.

Connecting to a Mobile Network

Before you can connect to an AT&T cellular network to use its data, you must first turn on the ElBraille's internal modem by doing the following:

1. Press **E1** followed by **U** to open the ElBraille Utilities menu.
2. Use the Left Rocker bar to navigate to Settings and press **DOT 8**.
3. Select Modem and press **SPACEBAR** to enable it.
4. Navigate to the OK button and press **DOT 8**.

In the United States or Canada, most cellular carriers will need the International Mobile Equipment Identification (IMEI) number of your EIBraille to activate the SIM card for use on the carrier's network. To get the EIBraille's IMEI number and register the unit on your carrier's network, do the following:

1. Press **WINDOWS Key+X (DOTS 4-8 CHORD, DOTS 1-3-4-6)** to open the Quick Link menu.
2. Select "Windows PowerShell (Admin)", making sure to select the Admin one in the list.
3. Type "netsh mbn show interface | Clip" without the quotes and press **DOT 8**. The value of the "device ID" parameter is displayed as well as copied to the Windows Clipboard. This is the IMEI of your EIBraille's modem. Make sure to paste this into a document and save it.
4. Type "exit" without the quotes and press **DOT 8** to close PowerShell.
5. Provide this IMEI number to your cell carrier in order to register the EIBraille on their network.
6. Hold the activated SIM card, with the angled corner facing away from you and to the right, and insert it into the Micro-Sim slot on the right side of the unit under the SD card slot until it clicks into place. (The cellular account must have available data.)

Once the SIM card is inserted, the EIBraille should automatically switch to your cellular network when a Wi-Fi connection is not available. To make sure the EIBraille can use your cellular network, do the following:

1. Press **WINDOWS Key+I (DOTS 4-8 CHORD, DOTS 2-4)** to open Windows Settings.
2. Navigate to Network and Internet and press **DOT 8**.
3. In the Network and Internet list box, navigate to Cellular and press **DOT 8**.
4. Verify the name of your cellular provider as AT&T and that EIBraille indicates "Connected".
5. Press **ALT+F4 (DOTS 1-6-8 CHORD, DOTS 1-4-5)** to close Settings.

Troubleshooting

Problem	Solution
The device will not turn on.	Charge the battery using the supplied AC adapter. If the battery is too low, the unit may not boot even when connected to the charger. Wait several minutes and then try turning the unit on again.
The battery is not charging or is taking longer to charge than expected.	Make sure you are using the charger supplied with the device. If the battery is charging, the LED indicator glows red.
Extra dots are appearing on the display and dots are sticking.	Clean the display as described in the Focus 40 Blue user guide.

Service and Support

You can contact Technical Support to receive technical assistance.

To contact by web, visit www.FreedomScientific.com/Forms/TechSupport, and complete the form to submit questions.

To contact by email, send questions to support@vispero.com.

To contact by telephone, U.S. customers can call (727) 803-8600, Monday through Friday, from 8:30 AM to 7:00 PM (Eastern Time).

When you call, please provide the following information:

- Product name
- Product serial number
- What you were doing when the problem occurred
- How you tried to solve the problem

Locating the EIBraille Serial Number

1. Press **E1** followed by **U** to open the EIBraille Utilities menu.
2. Use the Left Rocker bar to navigate to About and press **DOT 8**.
3. Press **P** until you reach the serial number.

Warranty and Registration

Congratulations on your purchase of the EIBraille.

The unit and its accessories come with a two-year warranty against manufacturing defects.

Note: These devices have no user-serviceable components. Any unauthorized attempt to service or replace internal components by opening the case will void the product warranty.

Please call Technical Support at (727) 803-8600 for assistance in troubleshooting any problems. If necessary, the technical support specialist will issue a Return Materials Authorization (RMA) number that must be referenced on the outside of the package containing your returned unit. The unit or its accessory will then be exchanged or repaired as needed.